

# GP500 TWIN TOILET

## ECO FUSION PULSE



Ground lowering, anti-vandal, robust and easy-to-use **twin axle mobile** welfare accommodation unit.

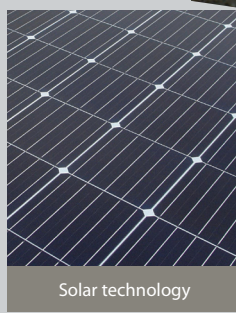
**HSE & CDM COMPLIANT**



**ECO FUSION PULSE MOBILE**

SEATS UP TO **12-14 PEOPLE**

**Securing site welfare**



**Innovative, functional, environmentally efficient and cost effective.**

The mobile GP500 Fusion Pulse Twin Toilet from **groundhog** offers all the latest standard features and benefits of the GP500 but with the added feature of two separate full flush toilets.

This incredibly robust and secure twin axle unit has a spacious welfare seating area and two separate ceramic ECO full flush toilets, making it a *natural choice for rental companies and contractors.*

The unit offers cost savings as the heating is supplied by an on board system which does not require the generator to run. The generator will only be required for microwave, kettle and hot water system.



Powered by roof mounted solar panel with generator back up



Fully hot-dipped galvanised chassis



12V diesel powered air blown heating system



Warm water from an on-board heating system



12V LED lighting with PIR



Inverter powered sockets with USB connectors



Two ceramic ECO full flush toilets



Fuel Active system



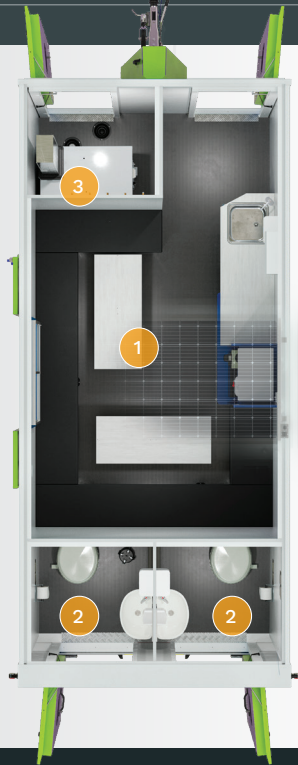
Lowered & secured in 3 minutes

# KEY FEATURES at a glance

Length	<b>5000 mm</b>
Length (including drawbar)	<b>6320 mm</b>
Height (on wheels)	<b>2.9 m</b>
Height (on ground)	<b>2.5 m</b>

Generator	<b>6 kVA</b>
Solar Panel	<b>x1</b>
Fresh Water Tank	<b>2 x 20 Litres</b>

Waste Water (under seating)	<b>55 Litres</b>
Toilet Waste Tank	<b>350 Litres</b>
Fuel Tank Size	<b>58 Litres</b>



## 1 Canteen Area

- Table and bench seating for up to 12-14 people
- 12V LED lighting with PIR
- 12V diesel powered air blown heating system
- Warm water supplied by a 230V on-board heating system
- Large stainless steel sink c/w warm water tap
- Inverter powered socket and USB connection
- Generator start panel c/w hour run meter
- Fresh & waste water containers
- Consumer board c/w RCD & MCBs
- Carbon monoxide monitor and smoke alarm
- 130Amp hour battery/ charger & battery guard

## 2 Toilet Area

- Eco full flush ceramic toilet
- Ceramic hand wash basin c/w warm water tap
- Warm water supplied by a 230V on-board heating system
- 12V LED lighting with PIR

## 3 Generator/ Warm Room

- 12V LED lighting with PIR
- 12V diesel powered air blown heating system
- Access to fuel tank with separate fuel level gauge (58 Ltr cap)
- Fuel Active system
- Generator start battery
- Fuel tank runtime = approx. 25 hours

The Fusion Pulse System

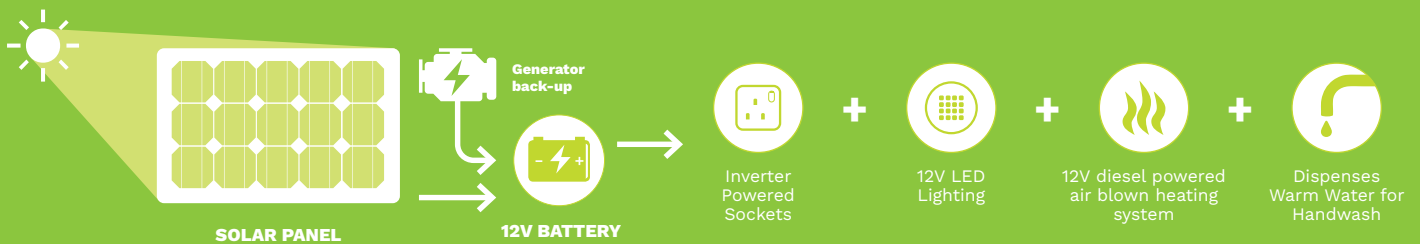
## INTELLIGENT SOLAR TECHNOLOGY



Highly efficient 130amp power AGM battery is charged via **intelligent solar power system** built in controller and backed up by an **on-board power silenced generator – ensures optimum performance is maintained when in use and unmanned.**



Scan QR code for more information.



## ECO BENEFITS

Engineering a **Zero Carbon Future**. Helping you achieve realistic carbon reduction goals.

<p><b>FUEL COSTS</b> REDUCED <b>UP TO 80%</b></p>	<p><b>INCREASED EFFICIENCY</b> with back-up power source</p>	<p><b>LOW NOISE POLLUTION</b></p>	<p><b>0% NOx / SOx</b> when generator is not in use</p>	<p><b>CO2 EMISSIONS</b> REDUCED <b>UP TO 80%</b></p>
---	--	-----------------------------------	---	--

Figures are for guidance only. For your own specific savings, contact us for your bespoke value proposition.



TEL: **01639 641166** | EMAIL: [sales@groundhog.co.uk](mailto:sales@groundhog.co.uk)  
[www.groundhog.co.uk](http://www.groundhog.co.uk)  
 Groundhog Ltd, Ynysgerwn Avenue, Aberdulais, Neath, SA10 8HH



Mobile Units have obtained type approval with **VCA**